

Alan Haynie

USA, NOAA Fisheries, Alaska Fisheries Science Center, Seattle, WA
Chair, ICES Strategic Initiative on the Human Dimension (SIHD)



ICES Social Science Initiatives, COVID-19, and Opportunities for the Future

reflections
WEBINAR ON COVID-19 IMPACTS



#icesreflections



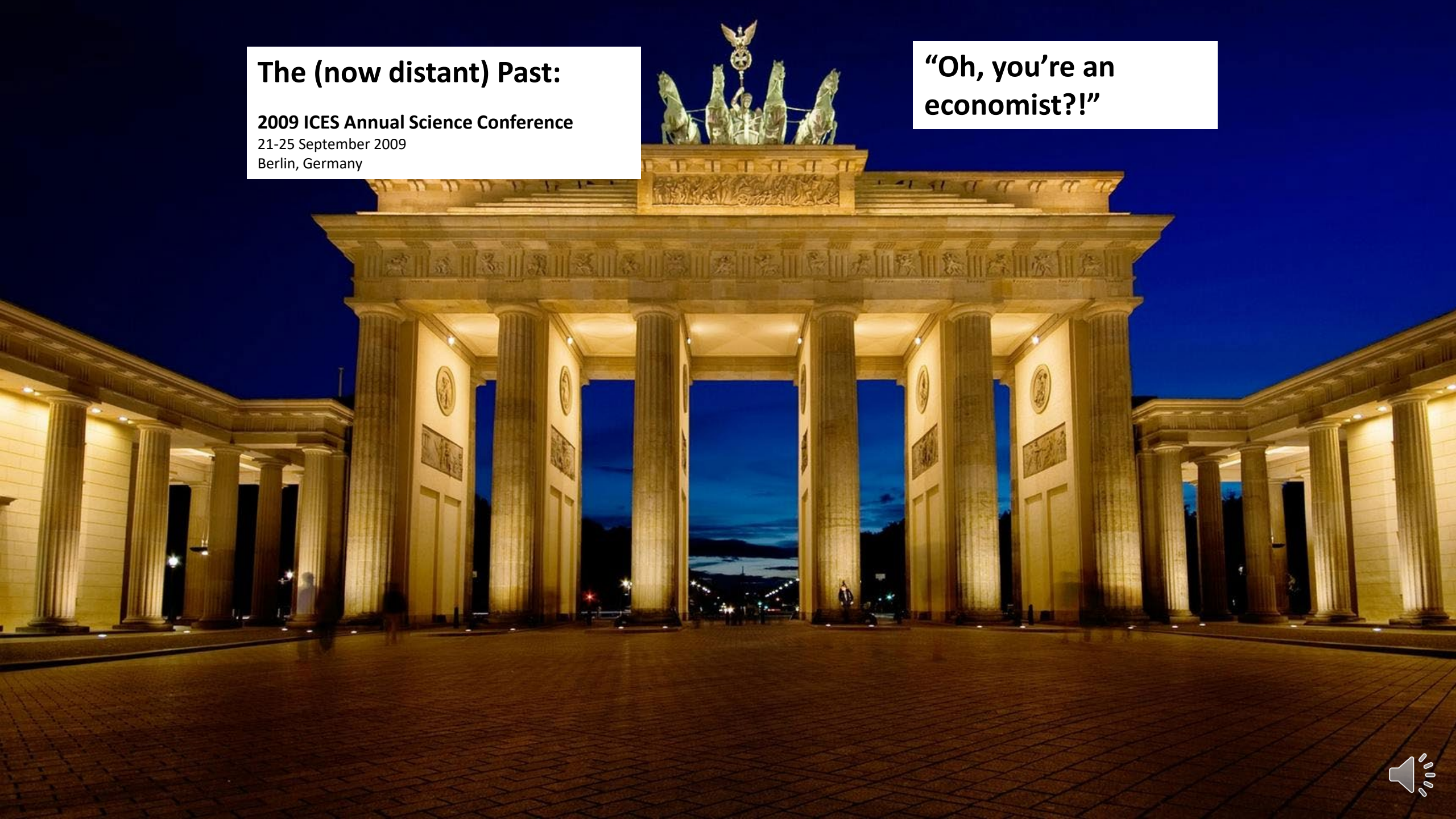
The (now distant) Past:

2009 ICES Annual Science Conference

21-25 September 2009

Berlin, Germany

“Oh, you’re an
economist?!”



The (now distant) Past:

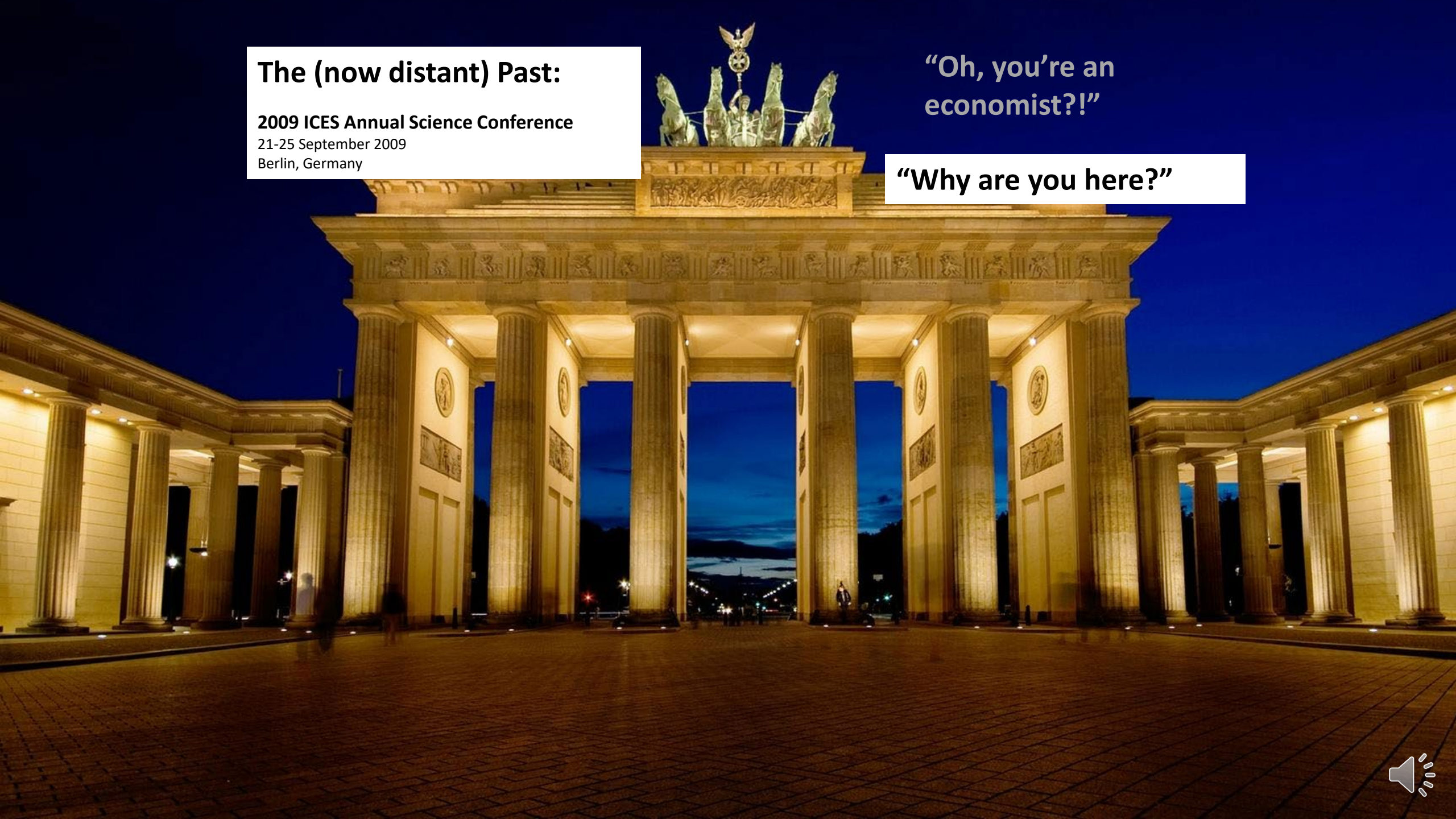
2009 ICES Annual Science Conference

21-25 September 2009

Berlin, Germany

“Oh, you’re an
economist?!”

“Why are you here?”



The Present: Humans and social science are central to ICES Scientific & Advisory Work

SCIENCE PRIORITIES

Our seven interrelated scientific priorities



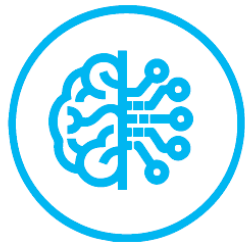
Ecosystem science



Impacts of human activities



Observation and exploration



Emerging techniques and technologies



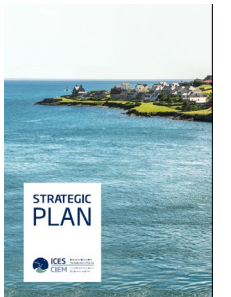
Seafood production



Conservation and management science



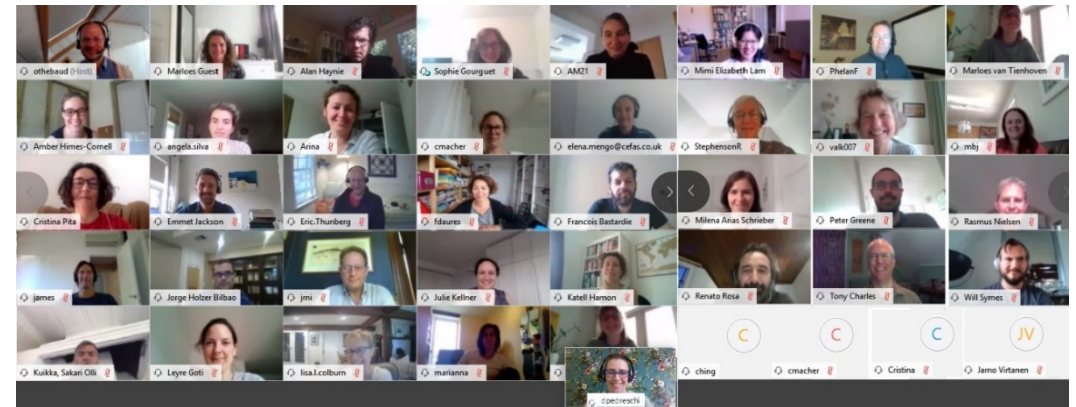
Sea and society



The Present: ICES Strategic Initiative on the Human Dimension (SIHD)

90+ SIHD Members – many social scientists from ICES countries and beyond.

Human Dimensions includes Economists, anthropologists, lawyers, historians, sociologists, and interdisciplinary scientists.



The Present: SIHD-related Groups



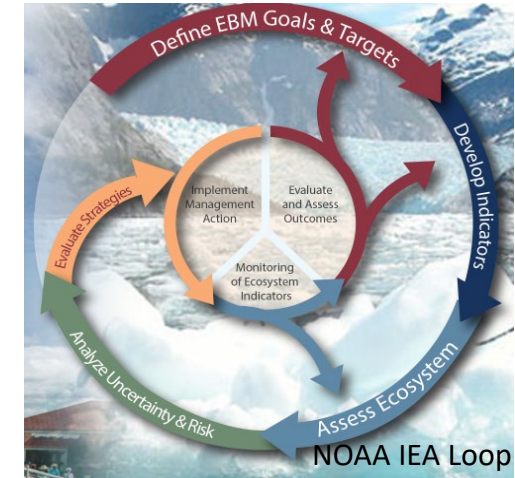
- **Working Group on Economics (WGECON)**
- **Working Group on Social indicators (WGSOCIAL)**
- **Working Group on Balancing Economic, Social, and Ecological Objectives in Integrated Assessments (WGBESEO)**

- **Working Group on Maritime Systems (WGMARS)**
- **Working Group on Social and Economic Dimensions of Aquaculture (WGSEDA)**
- **Working Group on Integrating Ecological and Economic Models (WGIMM)**
- **Working Group on Resilience and Marine Ecosystem Services (WGRMES)**
- **Working Group on the History of Fish and Fisheries (WGHIST)**
- **others**



The Present: WKCONSERVE

ICES workshop on Challenges, Opportunities, Needs and Successes in including human dimensions in Integrated Ecosystem Assessments (IEAs).



How are social sciences integrated in IEA groups?

Developed a specific plan for each IEA group to increase socioeconomic content.



The Present and the Future:

Interdisciplinary Research with the Strategic Initiative on Climate Change
+ ICES/PICES colleagues from diverse disciplines



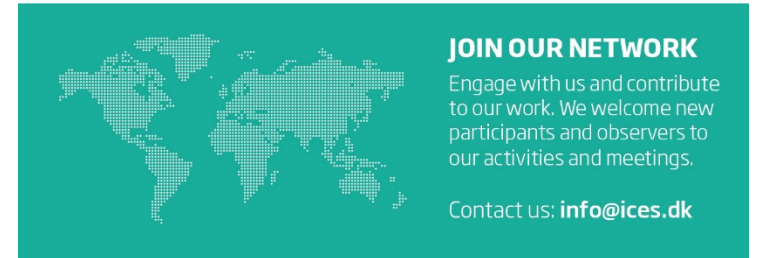
- MSEAS 2016 Brest, France & **MSEAS 2021 Yokohama, Japan**
- The ICES/PICES Workshop on Economic Modelling of the Effects of Climate Change on Fish and Fisheries (2016, Brest France)
+ WKPESTLE 2018, Washington DC



The Future: SIHD Priorities 2020 – 2022 – We need you!

Support the ICES Strategic, Science, and Advisory Plans through:

- Coordination
- Social Science & Interdisciplinary Research
- Communication, Outreach, and Stakeholder Engagement



ICES PRESENTS

reflections
WEBINAR ON COVID-19 IMPACTS

16 September 2020

Understanding the impacts of the COVID-19 pandemic on fisheries, markets, communities, and management

 16 September 2020 16:00-17:30 CEST - **REGISTER NOW**

www.ices.dk/reflections • #icesreflections

Email me about SIHD Interest:
Alan.Haynie@noaa.gov

COVID-19 has demonstrated the value and need for economic and social science data collection and research across ICES countries.

Long-term commitments and relationships are essential the best work.

We can learn from this experience – and build better management and increase the benefits to our citizens from our marine resources in a changing world.

 www.ices.dk/reflections • #icesreflections 

ICES PRESENTS



reflections
WEBINAR ON COVID-19 IMPACTS


16 September 2020

Understanding the impacts of the COVID-19 pandemic on fisheries, markets, communities, and management

 16 September 2020 16:00-17:30 CEST - **REGISTER NOW**

www.ices.dk/reflections • #icesreflections

Email me about SIHD Interest:
Alan.Haynie@noaa.gov




Doug Lipton

- Fisheries socioeconomic analysis and COVID-19, the US experience



Cristina Pita

- The impact of COVID-19 on the European small-scale fisheries industry



Marloes Kraan

- After the first shock: An assessment framework for understanding the impact of COVID-19 on fisheries